

GeoMx Auxiliary Server Installer

GeoMx Auxiliary Server Installer

GeoMx Data Analysis can be installed on a dedicated auxiliary server for increased performance and scalability.

Server Specifications

GeoMx Auxiliary Server software can be installed on either a physical server or a virtual machine. If installed on a virtual machine, nested virtualization support is required.

Required:

- Windows 2019 Server with Hyper-V enabled
- HTTPS (Port 443) open inbound
- Static IPv4 Address
- Network connectivity to the GeoMx instrument
- Two drives, OS drive smaller than the data drive

Recommended:

- CPU: Intel processor with 64-bit support, 3.40 GHz or faster, 4 cores
- Memory: 64GB DDR4
- OS SSD: 512GB
- Main Storage HD: 2TB

Drive Configuration

1. OS Drive – SSD Recommended 512GB

The OS drive should be designated as C and have **Windows Server 2019** installed.

2. Data Drive – Recommended 2TB

This drive should be empty as it will be formatted during installation and any contents will be deleted. This data drive will be used by GeoMx Data Analysis to store its database and other internal files. Once the GeoMx Data Analysis application has been installed, this drive will not be accessible from Windows.

Important Note: The data drive must be larger than the OS drive for the software installation to work properly.

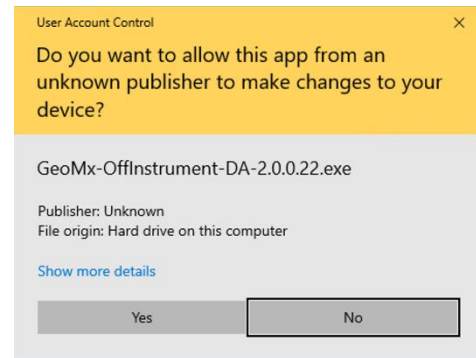
FOR RESEARCH USE ONLY. Not for use in diagnostic procedures.

© 2020 NanoString Technologies, Inc. All rights reserved.

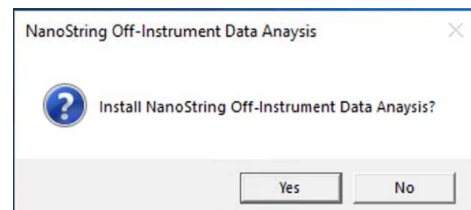
NanoString, NanoString Technologies, the NanoString logo, nCounter, and GeoMx are trademarks or registered trademarks of NanoString Technologies, Inc., in the United States and/or other countries.

Installation

1. **Copy the GeoMx Auxiliary Server installer**, *GeoMx-Auxiliary-Server-2.1.0.28.exe* (or similar), to a local folder on the target server's C drive.
2. **Double-click** the installer to **launch** it. Due to the large size of the installer, it will take some time load.
3. Select **Yes** when prompted to allow the application to make changes to your device.



4. Select **Yes** to begin the installation.



5. When the first portion of the install completes, press **Enter** to reboot the server.

```
Administrator: Windows PowerShell
Preparing to Install
(1) Creating Registry Entries
    -- Verified: HKLM:\SOFTWARE\NanoString
    -- ImageVersion
    -- SerialNumber
(2) Installing Hyper-V Feature
(3) Installing Microsoft .NET 4.8 Runtime
(4) Installing VC++ Redist 2010
(5) Installing VC++ Redist 2015
(6) Installing Certificate

Installation Will Continue After Reboot...
Press Enter to Exit and Reboot: _
```

6. After the reboot completes, **log back into the server**. The installation process will resume automatically.

- When the install is complete, the NanoString services will be started for the first time. NOTE: this first startup may take up to 15 minutes to complete.

```
Administrator: Windows PowerShell
Installing NanoString Off-Instrument DSPDA
-----
-Launching CAB File Installer
-Waiting for installer to complete...
-Installing content
-Waiting for service startup.....
```

- When the startup process is complete, a PIN number will be displayed. Make note of this PIN number, as it will be needed to “pair” this auxiliary server with your GeoMx instrument.

```
Administrator: Windows PowerShell
Installing NanoString Off-Instrument DSPDA
-----
-Launching CAB File Installer
-Waiting for installer to complete...
-Installing content
-Waiting for service startup.....
-Service startup complete

-----
Configuration PIN: 414697
-----

Please save this configuration PIN. It will be needed
to configure the GeoMX Instrument to use this server.

Press Enter to exit: 
```

- Once you’ve recorded the PIN number, press the **Enter** key to exit from the installer.

Refer to the **Off-Instrument Config** instructions under **GeoMx Instrument>Administration** at <https://www.nanostring.com/geomx-online-user-manual> for information on configuring the on-instrument GeoMx system with your newly-installed GeoMx Auxiliary Server software.